

CAMBIO

Making the metropolitan area
accessible by bike (and more)



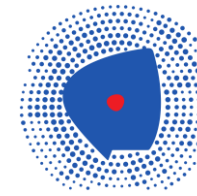
Finanziato
dall'Unione europea
NextGenerationEU



Città
metropolitana
di Milano



**Città
metropolitana
di Milano**



**Métropole
du Grand Paris**



Area: 1.600 Km²

Population: 3.250.000

Density: 2.000/km²

Municipalities: 133



Area: 814 Km²

Population: 7.075.000

Density: 8.700/km²

Municipalities: 131

MAIN ADMINISTRATIVE FUNCTIONS

Territorial Planning and development

- coordination of municipalities
- tourism
- european funding programmes
- Environmental protection

Infrastructure planning and management

- metropolitan roads and bicycle paths
- high schools
- optical fiber service



more sustainable

less emissions
creation of green corridors

The metropolitan area we want in the next future



safer

reducing road incidents
Making children, youth and elderly more autonomous



fairer

equal and better opportunities for all



more productive

less congestion
development of green economy



healthier

increasing daily exercise
integrated with commute

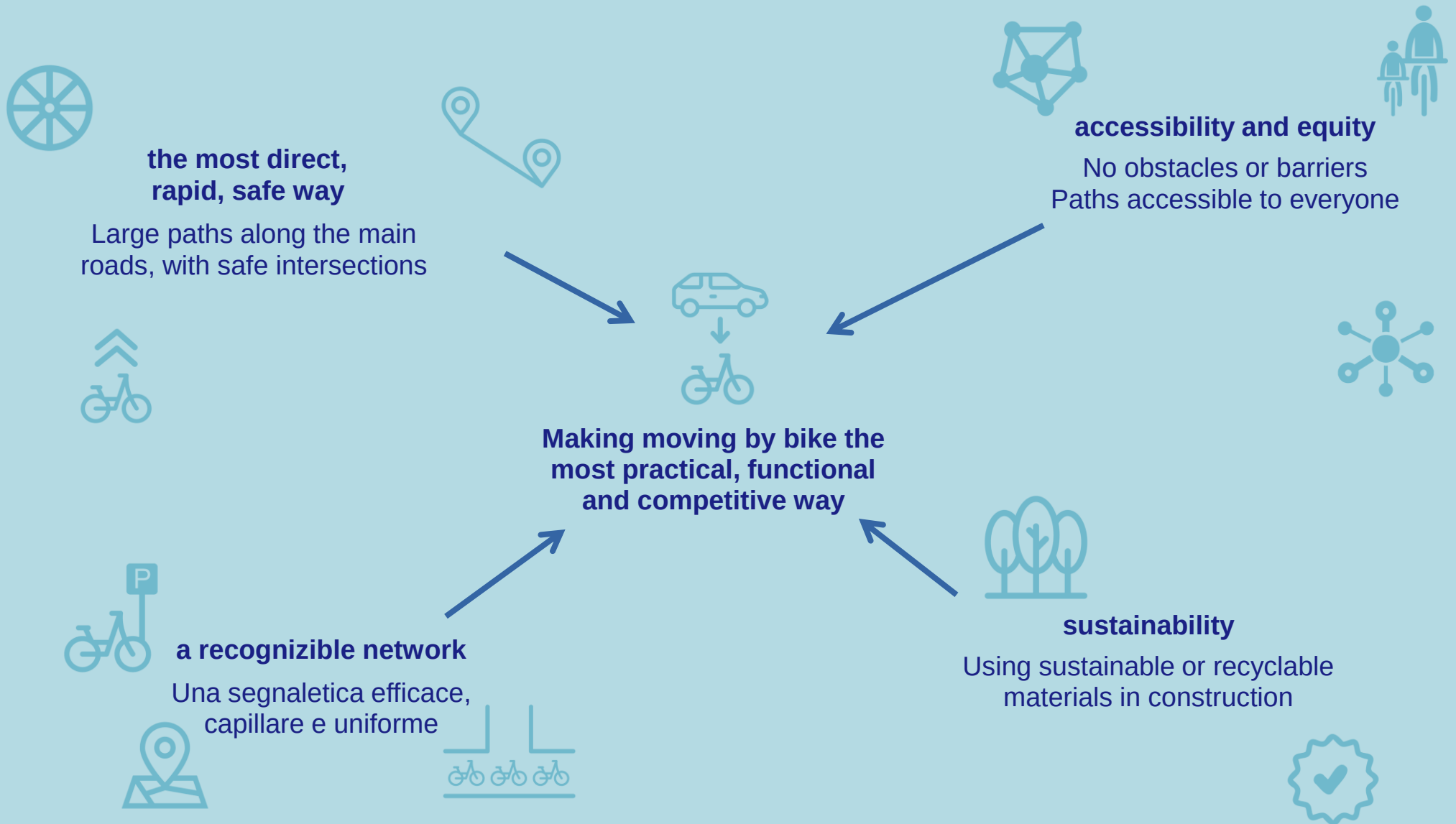


Finanziato dall'Unione europea
NextGenerationEU



Città metropolitana di Milano

PLANNING AND CONSTRUCTION CRITERIA



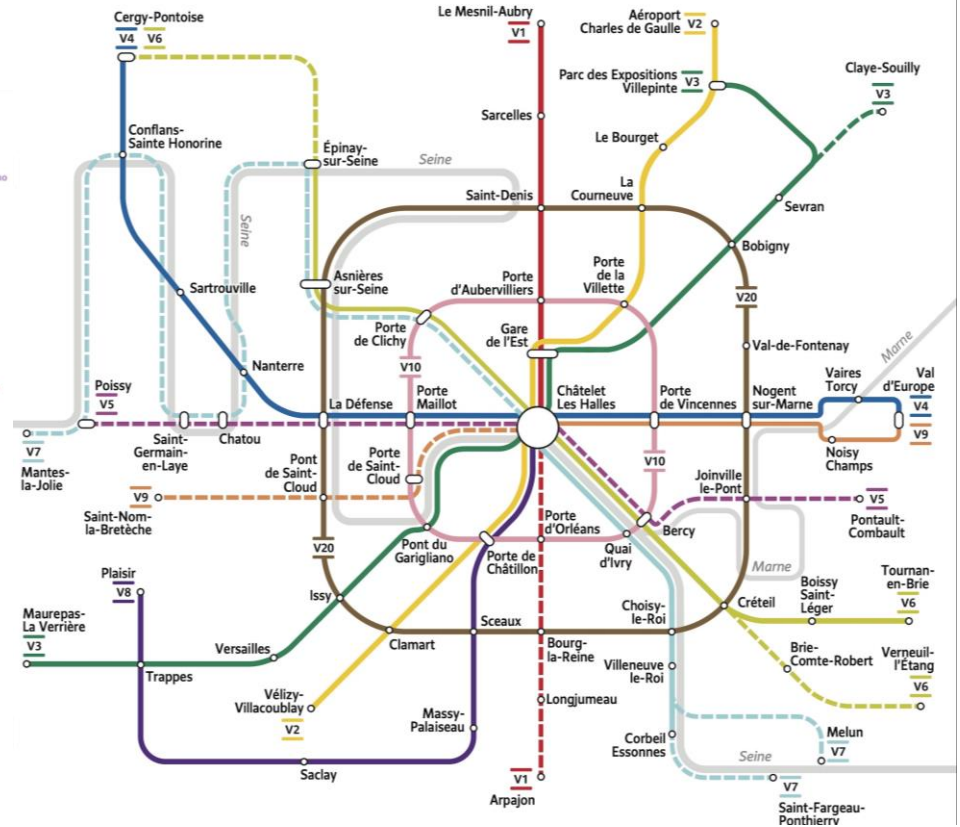
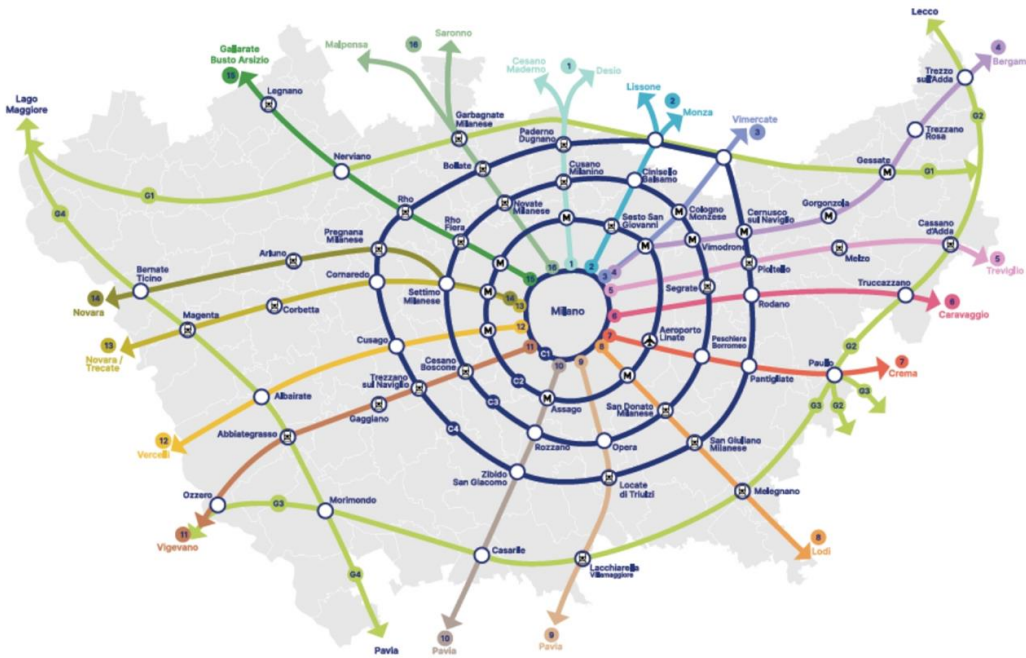
Finanziato dall'Unione europea
NextGenerationEU



Città metropolitana di Milano



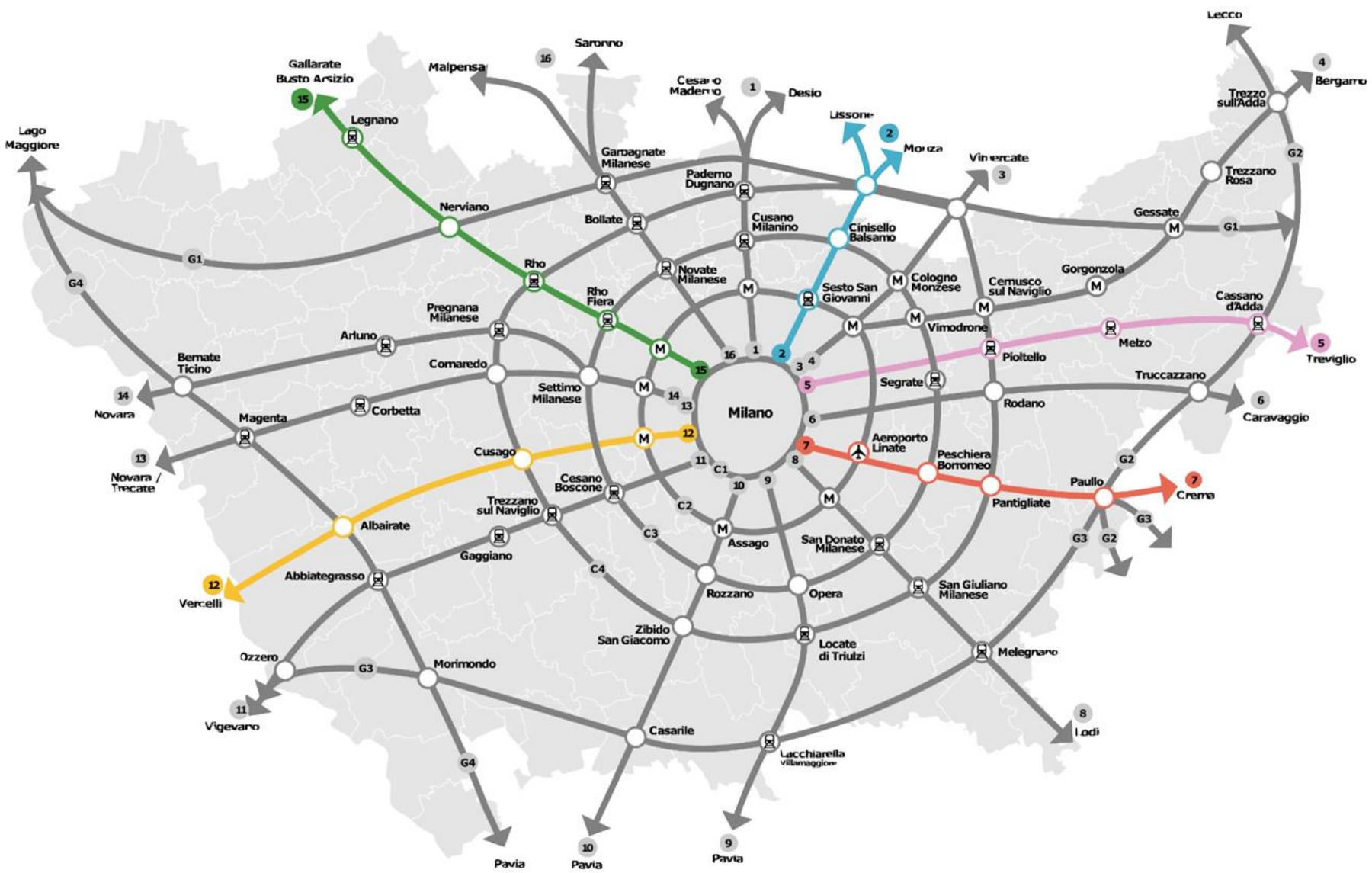
il Biciplan
della Città metropolitana di Milano



Finanziato
dall'Unione europea
NextGenerationEU



Città
metropolitana
di Milano

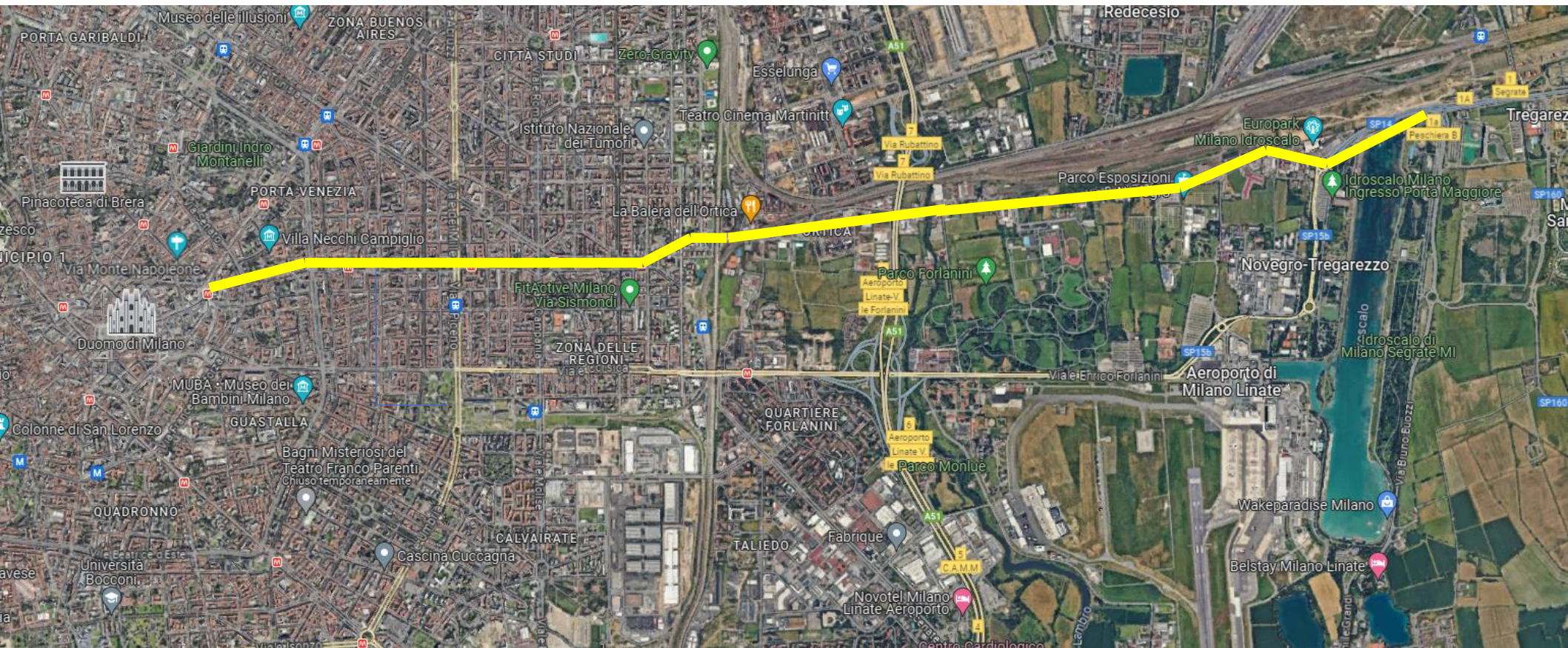


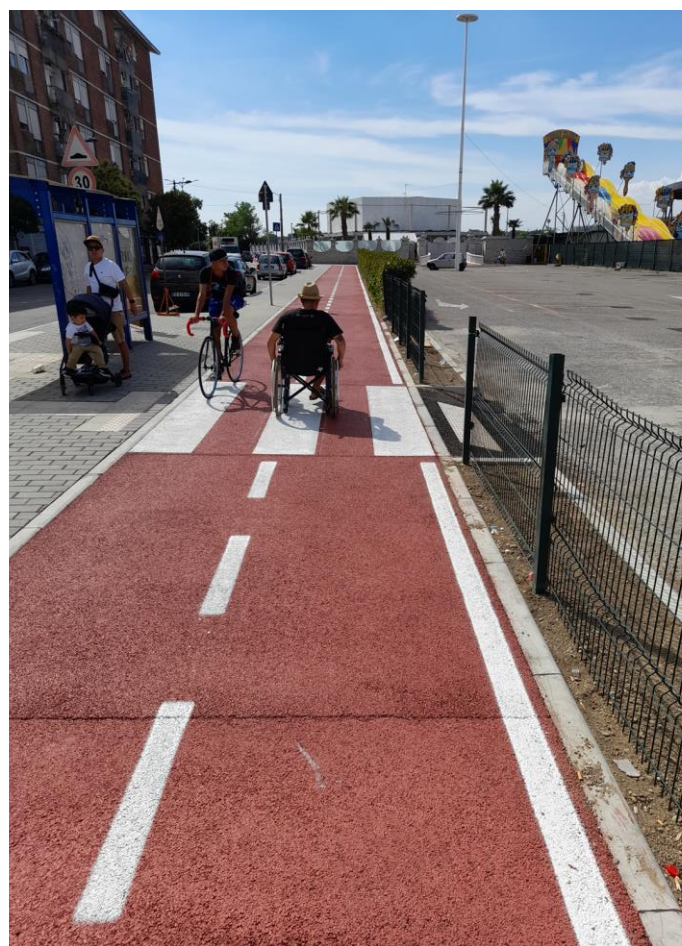
Finanziato dall'Unione europea
NextGenerationEU



Città metropolitana di Milano

MILANO – IDROSCALO FIRST SECTION OF LINE 6 (INAUGURATED ON JULY 2 2022)







Dealing with and connecting borderlands / no man's lands

Solving longtime issues



Improving communities



